

Lamma Tower 藍馬商業大廈

12-12A Hau Fook Street, Tsimshatsui



2/F 建築面積1,937sqf 賃料HK\$120,000

15/F 建築面積1,208sqf 賃料HK\$ 60,000

管理費 @HK\$4

1995年築

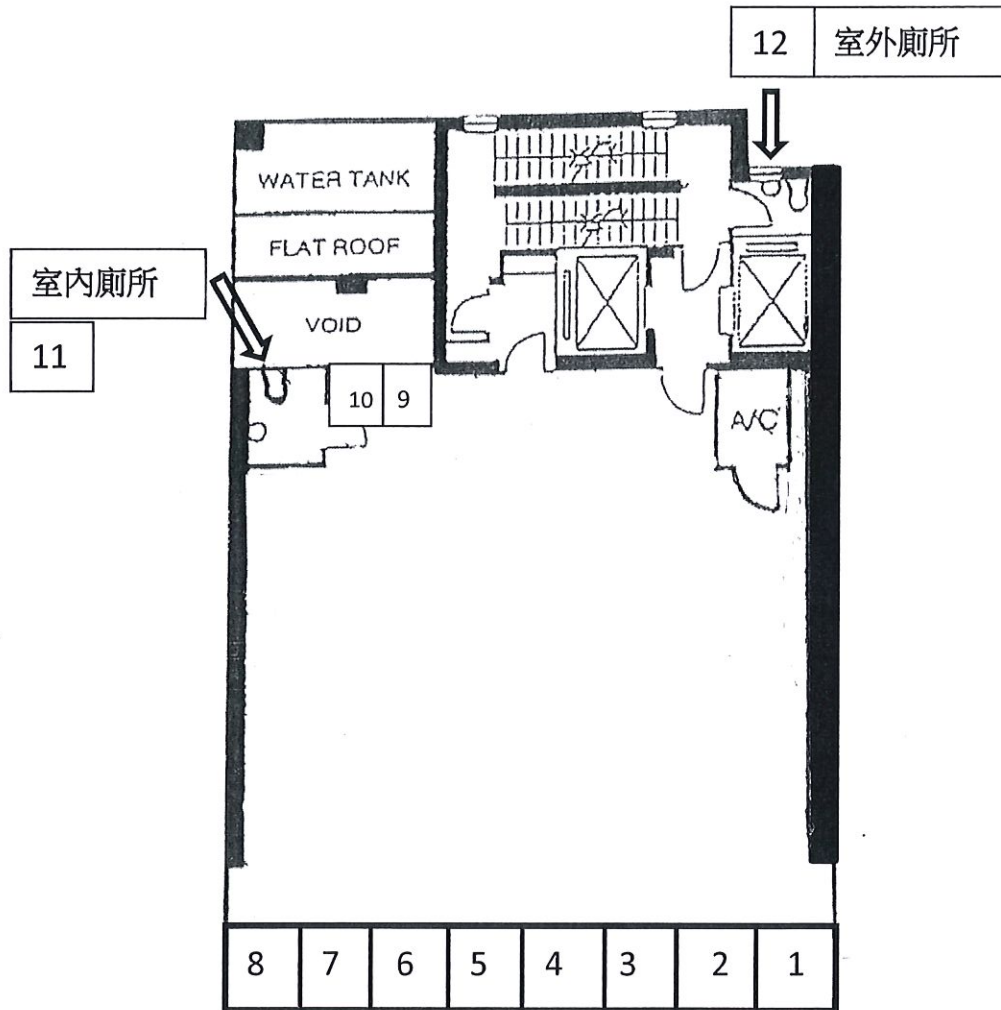


MAP: <https://goo.gl/maps/6pr4882Pb6SQe4v46>

厚福街 12-12A

藍馬 商業大廈

The Lamma Tower



2ND TO 3RD FLOOR

THE LAMMA TOWER, 12 - 12A HAU FOOK ST., TST

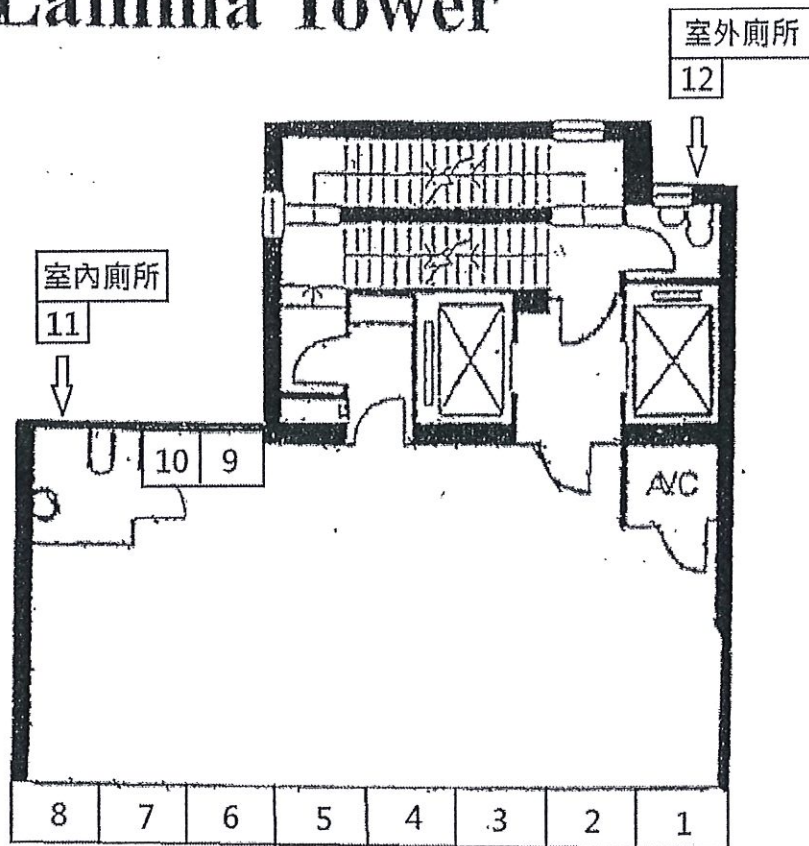
Gross Area is 1,937 Sq.ft

Note: All plans and floor area displayed is for reference only
The viewer is responsible to verify the actual size of the premises

厚福街 12-12A

藍馬 商業大廈

The Lamma Tower



6TH TO 22ND FLOOR

THE LAMMA TOWER, 12 - 12A HAU FOOK ST., ST., TST

Gross Area is 1,208 Sq. ft.

Note: All plans and floor area displayed is for reference only
The viewer is responsible to verify the actual size of the premises