

Room01, gross area approx. 350 sq.ft., **City-view double bed room,**
HK\$20,000-HK\$21,000* net a month



Room02, gross area approx. 270 sq.ft., **City-view double bed room,**
HK\$18,000-HK\$19,000* net a month



Room03, gross area approx. 360 sq.ft., **Sea-view double room,**
HK\$22,000-HK\$23,000* net a month

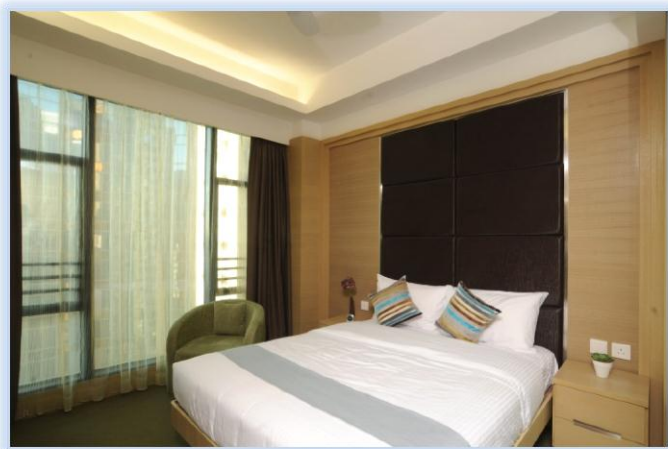


Room04, gross area approx. 240sq.ft., **City-view single bed room**,
HK\$15,500-HK\$16,500* net a month



Room05, gross area approx. 260sq.ft.,
Sea-view double bed room,
HK\$19,500-HK\$20,500* net a month

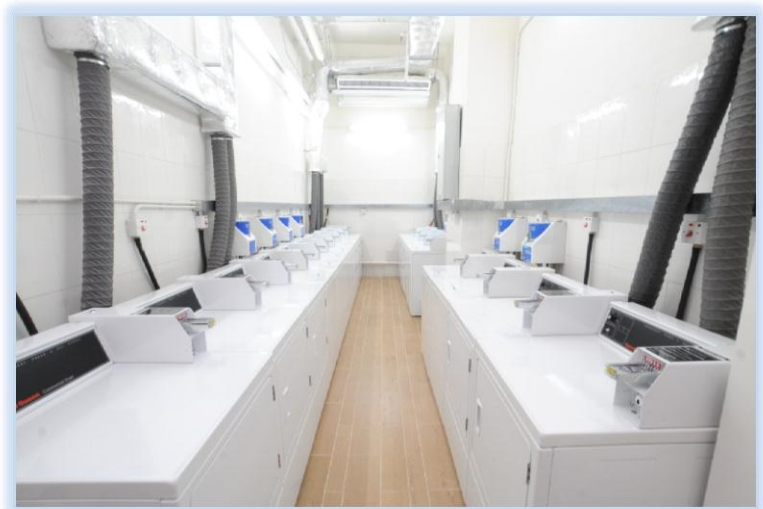




Room06, gross area approx. 310sq.ft., **Sea-view double bed room**,
HK\$21,000-HK\$22,000* net a month



◀ Individual private bathroom



▲ Self-serve laundry